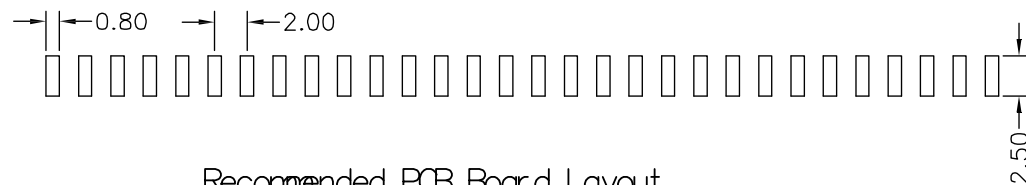
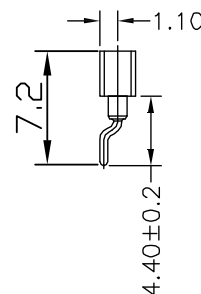
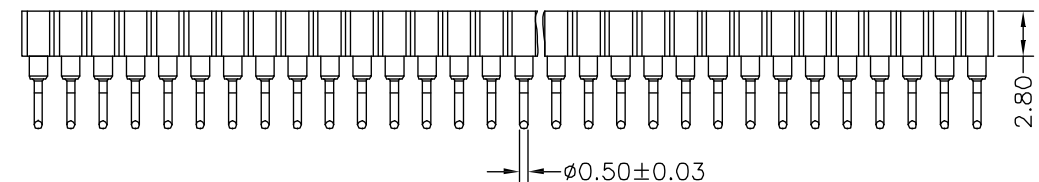
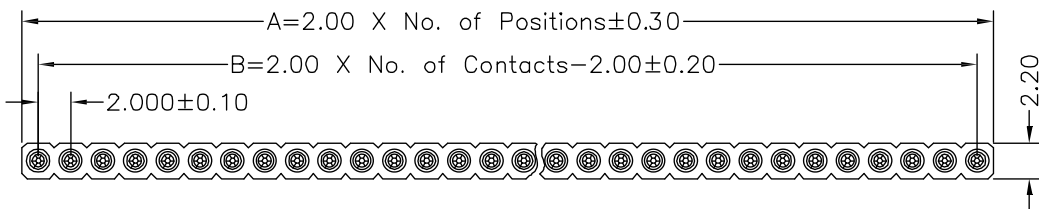


HSF RoHS

REV	ECN NO	DESCRIPTION	DATE	NAME
A	—	NEW	6/17-'20	HYJ



Recommended PCB Board Layout

Technical Data

Material:

Pin(outer sleeve): Brass,machined CuZn38Pb2

Clip(contact 6 finger): Beryllium Copper,heat treated

Plating(outer sleeve):

Tin plated:2µm/80µ"Ni, 5µm/200µ"Sn

Gold Plated:2µm/80µ"Ni,Full gold

Plating(contact): 2µm/80µ"Ni, gold or Tin plated

Insulator(black): Glass filled thermoplastic polyester

UL94V-0

Electrical:

Current rating: 3Amps/contact max.

Contact resistance: £4mW/contact

Insulation resistance: ³ 1000MW at V=100V

Operating voltage: 60VAC/DC

Mechanical:

Average insertion force with steel pin of

Ø0.43mm/0.17": <50g

Average withdrawal force with steel pin of

Ø0.43mm/0.17": >1.5g min.

Mechanical life cycle:min.200

Operating temperatures: Gold Plsted: -55°C to+105°C

Tin plated: -40°C to+105°C

Ordering Information

L488XX - X X XX A

P数
XX=XXP

产品类型
9=特殊

电镀规格
7=内金外锡

流水号
01-99

包装类型
A=袋装

STANDARD TOLERANCE (EXCEPT SPECIFIED)	
LINER	ANGLES
.0 ±0.30	0.° ±3°
.00 ±0.20	.0° ±2°
.000 ±0.10	.00° ±1°

LDCONN 连大		东莞连大精密制品有限公司 DongGuan LianDa Precision Products Co., LTD			
TITLE	排母圆孔型-J PH2.0X2.8 1XNP 卧式 L7.2 PC4.4	DRAWN BY	HYJ	6/17-'20	
PART NO	L488XX-97XXX	CHECKED BY			
DRAWING NO		APPROVED BY			
SCALE	1:1	UNIT	mm	PAGE	1/1
				SIZE	A4